

Name and surname:

U number:

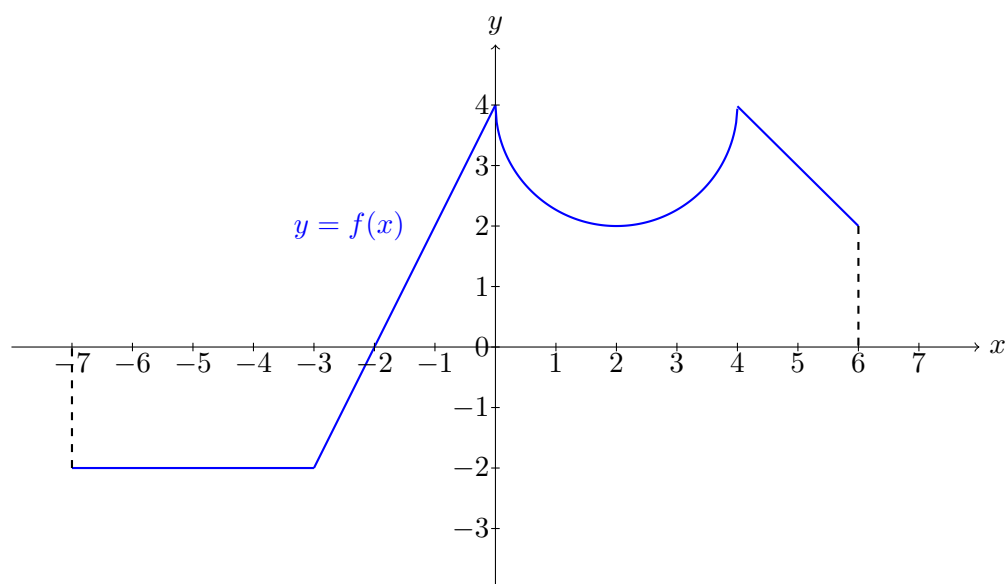
Calculus I - MAC 2311 - Section 001

Quiz 9

04/18/2018

Instructions: The total number of points of this quiz is 10. You will get an extra point if you solve correctly the last exercise.

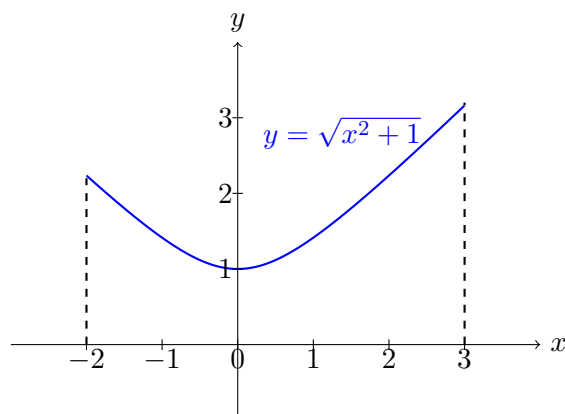
1) [5 points] Let f be the function whose graph is the following:



Compute $\int_{-7}^6 f(x) dx$.

- 2) a) [4 points] Approximate $\int_{-2}^3 \sqrt{x^2 + 1} dx$ using the **right** Riemann sum with $n = 5$.

- b) [1 point] Draw the rectangles associate to the previous Riemann sum in the following graph:



- 3) [Bonus] Compute $\int_{-2}^2 \sqrt{4 - x^2} dx$.